

INDIANA Members Credit Union

Keeping It Simple

MEMBER NEWSLETTER

DECEMBER 2023

HOLIDAY HOURS

Monday, December 25th:
All branches closed in
observance of Christmas

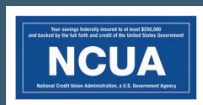
Monday, January 1st:
All branches closed in
observance of New Year's



IMCU GIFT CARDS AVAILABLE

Gift Cards can be purchased from
\$10 to \$1,000 and can be used
anywhere MasterCard®
is accepted.

Available for use only in the US
and \$3 purchase fee required.
Must be a member to purchase.
Designs may vary by branch.



INDIANAPOLIS
317.248.8556

TOLL FREE
1.800.556.9268

THANK YOU FOR YOUR DONATIONS!
Bring new, unwrapped toys to Central
Indiana branches by **December 6.**



WRTV **911 GIVES HOPE**
TOY DRIVE *for the Holidays*

Thank you
Evansville area
members for your
donations to the
911 Gives Hope
collection which
wrapped up in
November.

IMCU is a Proud Partner of the WRTV Toy Drive and the 911 Gives Hope for the Holidays Initiative. We appreciate your support!

'TIS THE SEASON TO WIN!

\$250 \$2,500

FOUR PRIZES ONE GRAND PRIZE

Just use your IMCU debit or credit card to enter to win through December 20!*
Each online purchase made with an IMCU debit or credit card is an automatic
entry into the drawing.



Add your Indiana Members Credit Union MasterCard® Debit or Credit Card as
the preferred payment option at popular online merchants like Amazon, HSN,
Walmart, iTunes, GrubHub, Groupon, Lyft and others.
The more times you use your card, the greater your chance of winning!
All winners will be chosen on December 21st.

DETAILS HERE!

EARN REWARDS WHILE HOLIDAY SHOPPING



Earn points to redeem for
**CASH BACK, travel, merchandise
and gift cards!**

APPLY NOW

LOW AUTO LOAN RATES!



**AUTO LOAN RATES
AS LOW AS**

5.74% APY¹

**36 MONTHS
2021 & NEWER MODELS**

APPLY NOW

FOLLOW US!



STAY INFORMED
WITH OUR BLOG!



IMCU.COM

GET YOUR CREDIT SCORE AND MORE NOW AVAILABLE IN THE IMCU APP!



Access your credit score, full credit report, credit monitoring, financial tips, and education. All of this without impacting your credit score.

Anytime and anywhere for FREE!

MORE INFO

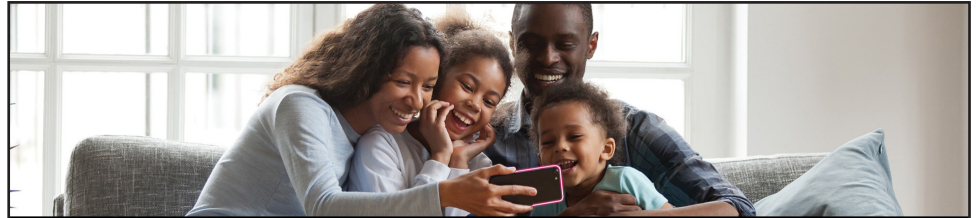
MORTGAGE MEMBERS: GOOD THINGS ARE COMING

Soon, members accessing their IMCU mortgage online will experience a fresh look, designed for an elevated experience!

IMCU WILL BE ACCEPTING SCHOLARSHIP APPLICATIONS

STARTING JAN. 1, 2024

VISIT [IMF4KIDS.ORG](https://www.imf4kids.org) FOR MORE INFO



Love My Credit Union® rewards

Amтел powered by

T-Mobile

Credit Union Member Offer

ACTIVATE. CELEBRATE.

Get \$50 when you switch to T-Mobile.

After rebate via virtual prepaid card when you port-in a new voice line on a qualifying plan.



Scan QR code to get this deal, or visit [CUMobile.lovemycreditunion.org](https://www.cumobile.lovemycreditunion.org)



presented by CareSource

Nov. 18 - Dec. 30

Adult: \$20.75

Youth (2-12): \$16.75

MON - THUR: 5-9 pm

FRI & SAT 5-10 pm

CLOSED: Christmas Eve

& Christmas Day

GET YOUR TICKETS HERE

CLIENT-FOCUSED INVESTMENT STRATEGIES

Indiana Members Investment Services* focuses on you and the unique set of financial circumstances you and your family face. Getting to know you and understanding your particular needs allows us to create an investment strategy that aligns with your objective. By building a lasting and personal relationship with you, we're able to help you anticipate needs and plan for the future. We have access to a variety of products and services to help pursue your individualized goals, such as:

- Annuities (Fixed, Variable and Index) • Retirement Planning
- Rollover Services • Mutual Funds, Stocks and Bonds
- Traditional & Roth Investment IRA's • Wealth Management

Give Indiana Members Investment Services a call today for a no-cost, no-obligation consultation. 317.610.3945 or visit your local IMCU branch!



Genan Kirby
Financial Advisor



Jeff Olbina
Financial Advisor



Gregg Perrey
Financial Advisor

INDIANA Members Investment Services

*Securities and advisory services are offered through LPL Financial (LPL), a registered investment advisor and broker-dealer (member FINRA/SIPC). Insurance products are offered through LPL or its licensed affiliates. Indiana Members Credit Union and Indiana Members Investment Services **are not** registered as a broker-dealer or investment advisor. Registered representatives of LPL offer products and services using Indiana Members Investment Services, and may also be employees of Indiana Members Credit Union. These products and services are being offered through LPL or its affiliates, which are separate entities from, and not affiliates of, Indiana Members Credit Union or Indiana Members Investment Services. Securities and insurance offered through LPL or its affiliates are:

Not Insured by NCUA or Any Other Government Agency

Not Credit Union Guaranteed

Not Credit Union Deposits or Obligations

May Lose Value

Indiana Members Credit Union provides referrals to financial professionals of LPL Financial LLC ("LPL") pursuant to an agreement that allows LPL to pay Indiana Members Credit Union for these referrals. This creates an incentive for Indiana Members Credit Union to make these referrals, resulting in a conflict of interest. Indiana Members Credit Union is not a current client of LPL for advisory services. Please visit <https://www.lpl.com/disclosures/is-lpl-relationship-disclosure.html> for more detailed information.

The LPL Financial registered representative(s) associated with this website may discuss and/or transact business only with residents of the states in which they are properly registered or licensed. No offers may be made or accepted from any resident of any other state.

INDIANAPOLIS
317.248.8556

TOLL FREE
1.800.556.9268

IMCU.COM